



What is NeuronUP?

NeuronUP is a digital platform that includes an **ever-growing online library** designed to act as a key support for professionals involved in improving the **quality of life** of people with **intellectual disabilities** and enhancing their **autonomy**.

In which profiles can NeuronUP be used?

- | | |
|-------------------------------------|--------------------------|
| 1. Down Syndrome | 7. Prader Willi Syndrome |
| 2. Brain malformations | 8. Klinefelter syndrome |
| 3. Brain infections | 9. Tay-Sachs disease |
| 4. Prematurity | 10. Phenylketonuria |
| 5. Adverse environmental influences | 11. Hypothyroidism |
| 6. Fragile X syndrome | 12. Others |



Thousand of exercises

Find all the cognitive stimulation materials you were looking for, classified by **cognitive functions and age**, and **without wasting a single minute** of your time, investing it in what really matters, **your patients**.



Home sessions

Reinforce your intervention with remote sessions, **strengthen adherence to treatment** and enable the **continuity of your intervention** for patients who live far away or have travel difficulties.



Motivate and engage the patient

96% of our clients state that their patients are more motivated thanks to the **personalization possibilities** offered by the platform.



Digital and printable material

Combine the activities in digital format with paper-based exercises for a complete intervention.



Results

The results of each patient are saved instantly, so you can redefine the therapy according to their progress, promoting a **continuous and guided improvement**.



NeuronUP Score

Compare your patients' data with their past results and measure their progress with the **evolution graphs** for better tracking.

NeuronUP working area

The screenshot shows the NeuronUP working area interface. At the top, there are several filter menus: 'Activity format' (Activities, Digital Activities, Printable Activities), 'Filter Age' (All, Adult, Children), 'Filter Activity type' (All, Worksheets, Generators, Games), and 'Activities language' (Spanish, English, French, Portuguese, Portuguese (Brazil), Catalan). A 'Tutorials' menu is also visible. The main area displays a grid of activity cards, including 'Coming soon', 'Half-hidden Objects', 'What Number Do You Hear?', 'Mental Reconstruction of Cubes', 'What is Each Thing Like?', 'Complete the Image', and 'Fast Partners'. A sidebar on the left contains navigation options like 'Filter Client', 'Sessions', 'Programs', 'Digital Results', and 'Extra Resources'. The bottom of the screen shows a 'Collapsible Menu' and a 'Collapse Menu' button.

Areas of Intervention | Cognitive Functions

<p>Memory Semantic Episodic Procedural</p>	<p>Orientation Personal Time Place</p>	<p>Gnosis Visual Auditory Tactile Gustatory Olfactory Body Schema</p>	<p>Language Expression Comprehension Vocabulary Naming Fluency Discrimination Repetition Reading Writing</p>
<p>Attention Processing Speed Sustained Selective Alternating Hemineglect</p>	<p>Executive Functions Working Memory Reasoning Planning Inhibition Flexibility Decision Making Time Estimation Dual Execution Branching</p>	<p>Praxis Facial Ideomotor Ideational Visoconstructive</p>	<p>Social Cognition</p>

Areas of Intervention | Areas of Occupation

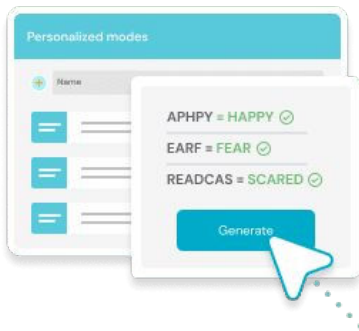
<p>Activities of daily living</p>	<p>Basic ADL's Bathing Continence Dressing Eating Feeding Ambulation Hygiene and Grooming Toileting</p>	<p>Instrumental ADL's Communication Transportation Finances Health Housekeeping Cooking and Cleaning Safety Shopping</p>	<p>Social Skills</p>	<p>Education Work Play Leisure Social Participation</p>
--	--	---	-----------------------------	--

Type of activities



Generators (digital / paper)

Avoid the patient memorizing the activity by creating infinite versions of the same activity, which can be done in both digital and paper formats. **Highly customizable** to facilitate the introduction of meaningful stimuli.



Games (digital)

Organized in **different levels of difficulty** through which the patient will advance or go back automatically depending on their capabilities. They are also customizable.

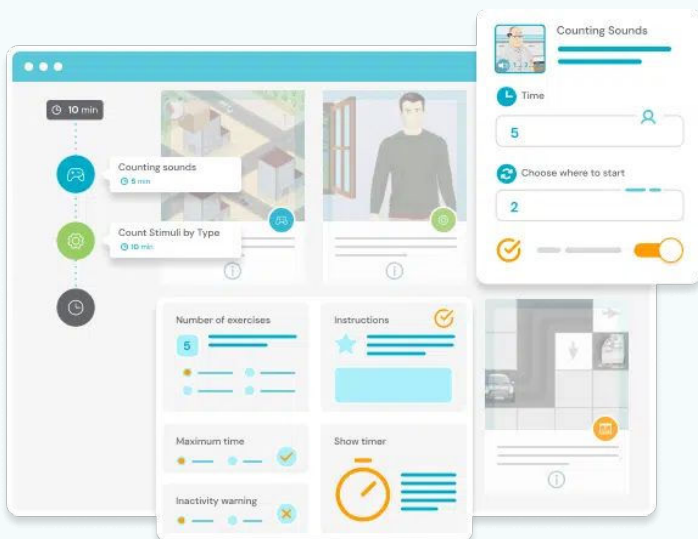


Worksheets (digital / paper)

Organized in up to five levels of difficulty. You can **work with them in digital or paper format** so that you can adapt them to the needs of your patients.



Personalization of activities



✓ **Increase your patients' motivation and performance** by adapting games and generators to their cognitive level, needs and interests.

✓ Engage your patients by using **familiar stimuli**.

✓ **Save time** by defining your own catalog of customized activities to reuse whenever you need them.

Example of custom activity:

Default

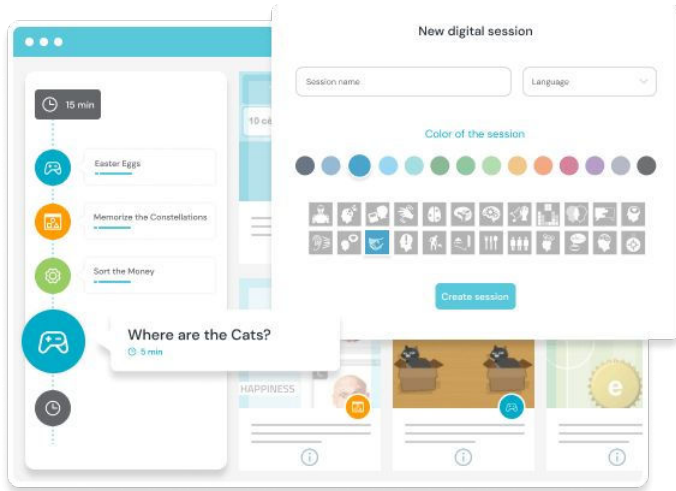
- | | |
|------------------|-------------------|
| 1. UCELN = UNCLE | 6. ECNOL = CLONE |
| 2. ILUQA = QUAIL | 7. GH LAU = LAUGH |
| 3. LWSEL = SWELL | 8. RHDAC = CHARD |
| 4. LLASM = SMALL | 9. SADLA = SALAD |
| 5. TULEF = FLUTE | 10. ASMPW = SWAMP |

Customization example

- | | |
|----------------------------|------------------------|
| 1. NOROGE = OREGON | 6. ANANTMO = MONTANA |
| 2. OGEIRGA = GEORGIA | 7. AOODCORL = COLORADO |
| 3. RIOLAIFANC = CALIFORNIA | 8. OIHO = OHIO |
| 4. ASETX = TEXAS | 9. FDROILA = FLORIDA |
| 5. ZAI AORN = ARIZONA | 10. SAAKAL = ALASKA |

Plan your intervention for your patients in just a few minutes.

Sessions



1. Add activities

Choose, edit and order the activities that best fit the objectives of your session.

2. Assign the session to one or several patients

NeuronUP allows you to work with several patients simultaneously, automatically adapting the level of each activity to the individual progress of each patient.

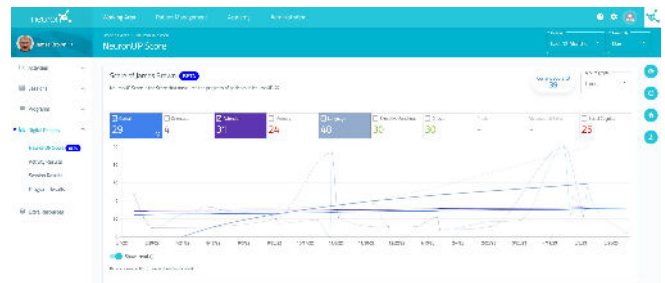
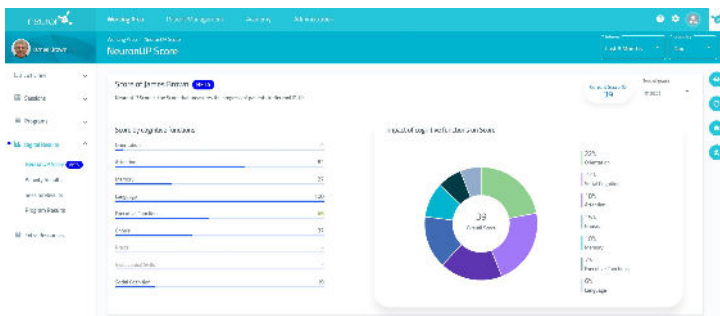
3. Plan the session on your calendar

Organize yourself by setting a specific date for each session and define whether it will be worked in clinic or remotely.

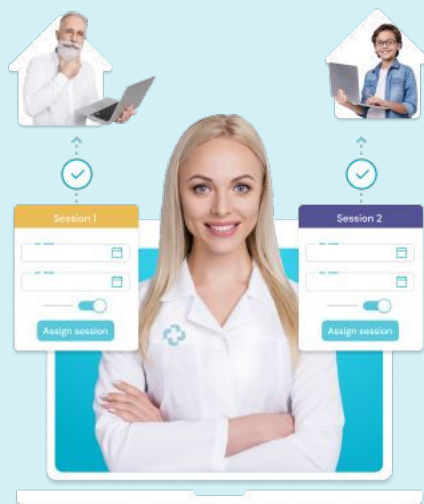
NeuronUP Score

Analyze your patients' evolution

- Compare your patients' data with their past performances.
- Measure their progress with **evolution graphs** for better tracking.
- Show the effectiveness of your therapy with data to your patients and their families.



Activity	NeuronUP Score	Goal Score	Type	Diagnostic Purpose
Where are the Cats?	40	40	Game	Memory
Complete the page	25	40	Activity	Class 2
Colorful shapes	100	100	Game	Attention, working memory
Map Memory	24	40	Game	Processing Speed, Short-term memory
Colorful words	18	40	Game	Attention, short-term memory, working memory
Don't lose	54	40	Game	Working Memory, Attention, short-term memory
Memory of the words	15	40	Game	Attention, short-term memory
The Memory	60	40	Game	Attention, short-term memory
Colorful shapes	15	40	Game	Attention, short-term memory



Telerehabilitation: Send home sessions

Reinforce the work done in your center.

Avoid interruption of therapy during illness and facilitate intervention for people with travel difficulties*.

* NeuronUP2GO (access from home) has an additional cost per patient per month.

Unlimited patients

You can **create as many patient profiles as you need at no extra cost.**
You can work **simultaneously** with as many patients as you want.



"From our experience, we mainly highlight the large number of different activities available, the wide range of cognitive functions that can be worked on, the possibility of individualizing each intervention and, above all, that it is attractive and entertaining for the participants. Without motivation there is no learning. Since we have started working with it, we have observed a high level of motivation in the use of the tool for those who use it".

Down Madrid

Jorge González



NeuronUP gives me the opportunity to create and provide an organized, fun and consistent treatment plans for each of my client's based on their personal skill sets. Furthermore, NeuronUP's adaptive multi-format therapy feature has helped my practice transition from teletherapy into a clinic setting and vice versa. I can print out paper worksheets for my clients for a more physical/tactile approach to their sessions and I can send copies of those worksheets home with parents to work on at home for extra practice. Most importantly, my patients love the interactive activities that help them reach their goals and potential. I highly recommend NeuronUP!"

Time to Thrive Children's Therapy

Jessica Garcia



The variety of activities as well complexity and challenge levels available means that there is something to challenge almost all of my people. I can choose the level of the activities, I can adjust the program "on the fly" if my client is having a difficult time or an exceptionally good day. The staff are open to feedback and have made modifications based on my suggestions. It feels like we work as a team. Also, there is a constant stream of new content giving me more to choose from for my treatment programs.

Trellis Coaching & Counselling

Trish White, Occupational Therapist



NeuronUP has been a great tool to complement our cognitive stimulation therapies. Being a larger rehabilitation center, it allows us to save time while creating a personalized rehabilitation for each and every patient. It has thousands of different activities and materials that the patients enjoy too! "

Center for Cognition and Communication

Dr. Jason Brown